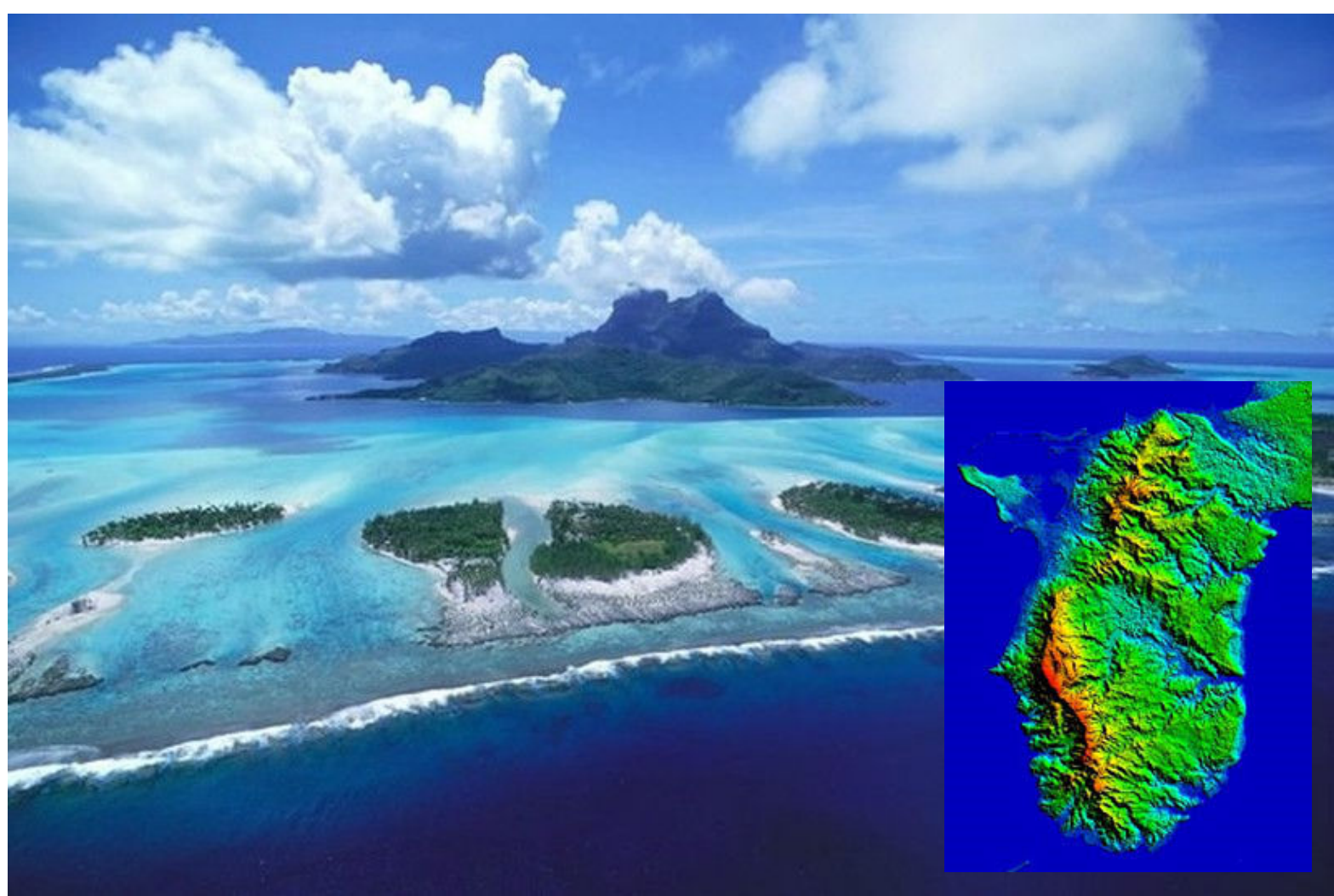


DIGITAL MAPS FOR SOUTH PACIFIC ISLANDS

Technical brief



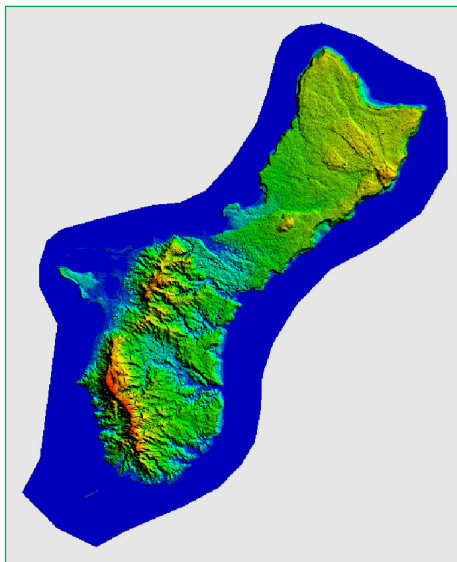
COUNTRYWIDE REGIONAL MODEL FOR SOUTH PACIFIC ISLANDS

Product description

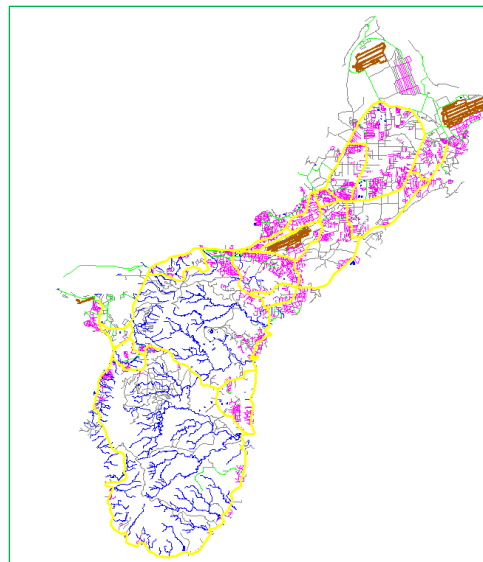
Country	Area, km ²	Data Relevance	Country	Area, km ²	Data Relevance
American Samoa	269	2016	Marshall Islands	1823	2016
Cook Islands	509	2016	Micronesia	1568	2016
Palau	759	2016	Tonga	1255	2016
Samoa	3090	2016	French Polynesia	7970	2016
Nauru	32	2016	Kiribati	1987	2016
Pitcairn Islands	97	2016	Vanuatu	13950	2016
Tuvalu	180	2016	New Caledonia	20490	2016
Wallis and Futuna	231	2016	Fiji	21300	2016
Guam (USA)	635	2016	Solomon Islands	33360	2016
Northern Mariana Islands	681	2016	Papua New Guinea	475500	2016

Data layers	Parameters	Statistics
<ul style="list-style-type: none"> DTM Clutter Model Vector Model Text labels POIs 	Resolution: 20/30/50 m Planimetric accuracy (XY): 20-30 m Altimetric accuracy (Z): 10-15 m Data relevance: 2016	<ul style="list-style-type: none"> 20 countries 9 466 islands 571 650 sq.km of land areas 14 350 000 sq.km of total area

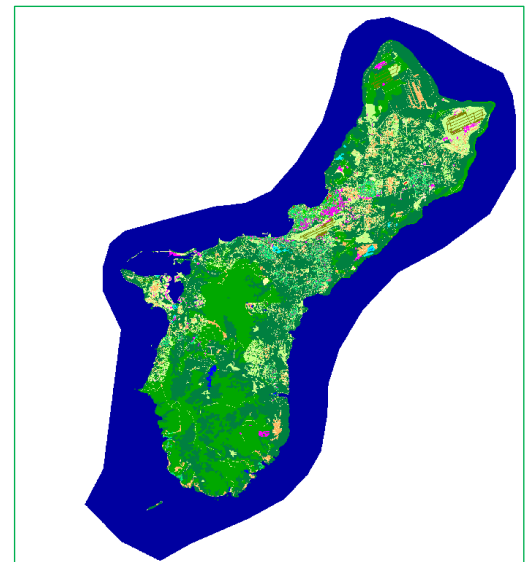
SAMPLES OF REGIONAL MODEL DATASET



Digital Terrain Model



Vector Model



Clutter Model

DATA SAMPLES FOR ANY TERRITORY CAN BE PROVIDED FOR FREE IN ANY RF-FORMAT

Our team is always in touch to provide you with all necessary information about VISICOM products, to assist you with pre-sales enquiries, commercial offers and customer support