

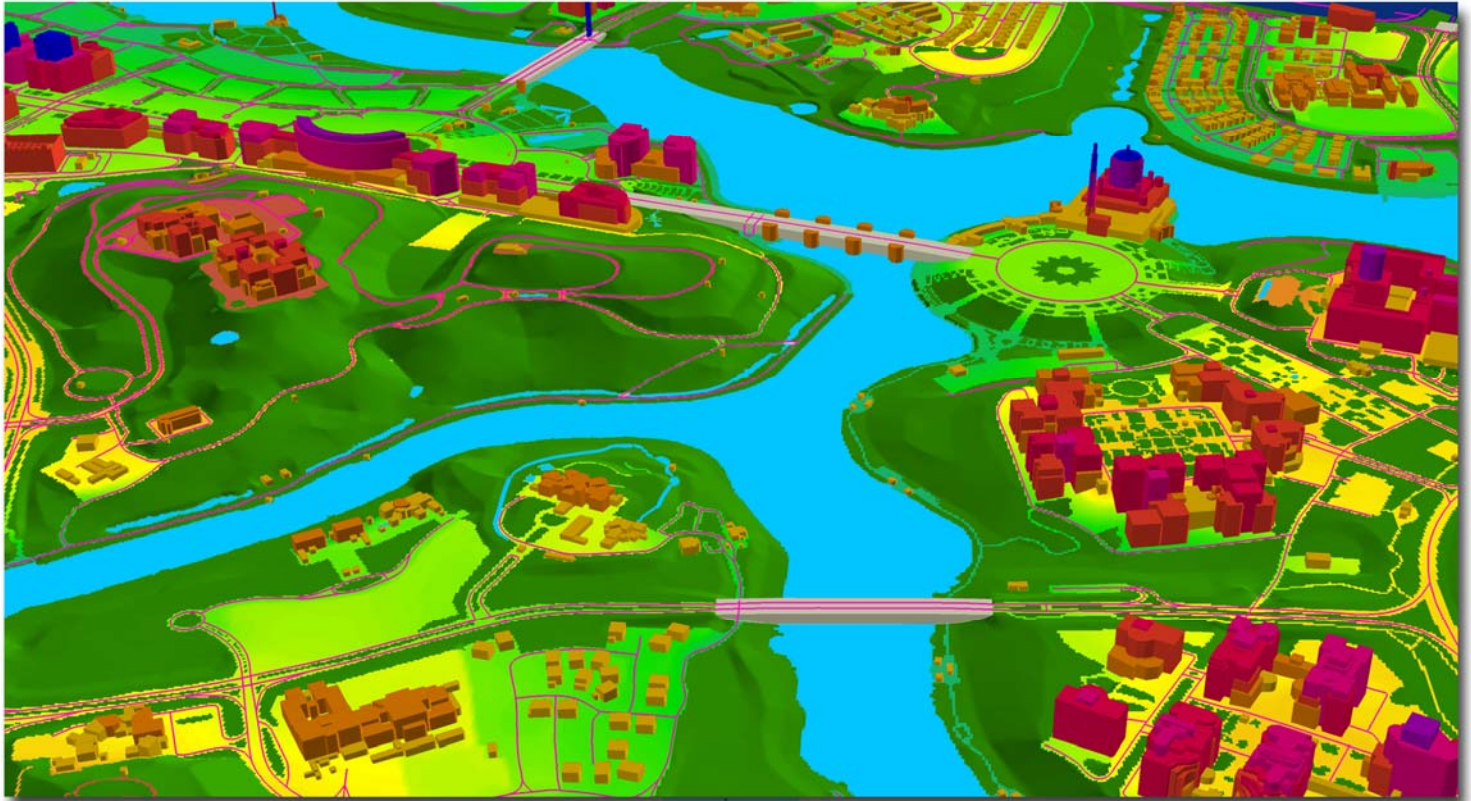
**VISICOM**<sup>®</sup>

DIGITAL MAPS TAILORED SPECIFICALLY FOR RF-PLANNING



**PUTRAJAYA (MALAYSIA) 2D & 3D MODEL**

# VISICOM 2D&3D MODELS - available worldwide for: 3G ▪ 4G ▪ GSM ▪ LTE ▪ WiMax ▪ UMTS ▪ CDMA ▪ HSDPA



## Putrajaya 2D model

Area: 100 sq. km

- Resolution: 10 m
- Altimetric accuracy:  $\pm 5$ m
- Planimetric accuracy: 10-15m

Sources: WorldView1 satellite image with 0.5m resolution, vintage -2010.

Layers available: DTM, Clutters (16 classes), Vectors (8 classes), Text labels

## Putrajaya 3D model (test sample)

Area: 5 sq.km

- Resolution: 2 m
- Altimetric accuracy: 2-3 m
- Planimetric accuracy : 3-5 m
- Buildings heights accuracy: 2-3 m.

Sources: Stereo pair of WorldView 1 satellite image with 0.5m resolution, vintage 2010.

Layers available: DTM, Clutters (20 classes), Vectors (8 classes), Building Heights Model, Text labels.

