

# MAKKAH 3D

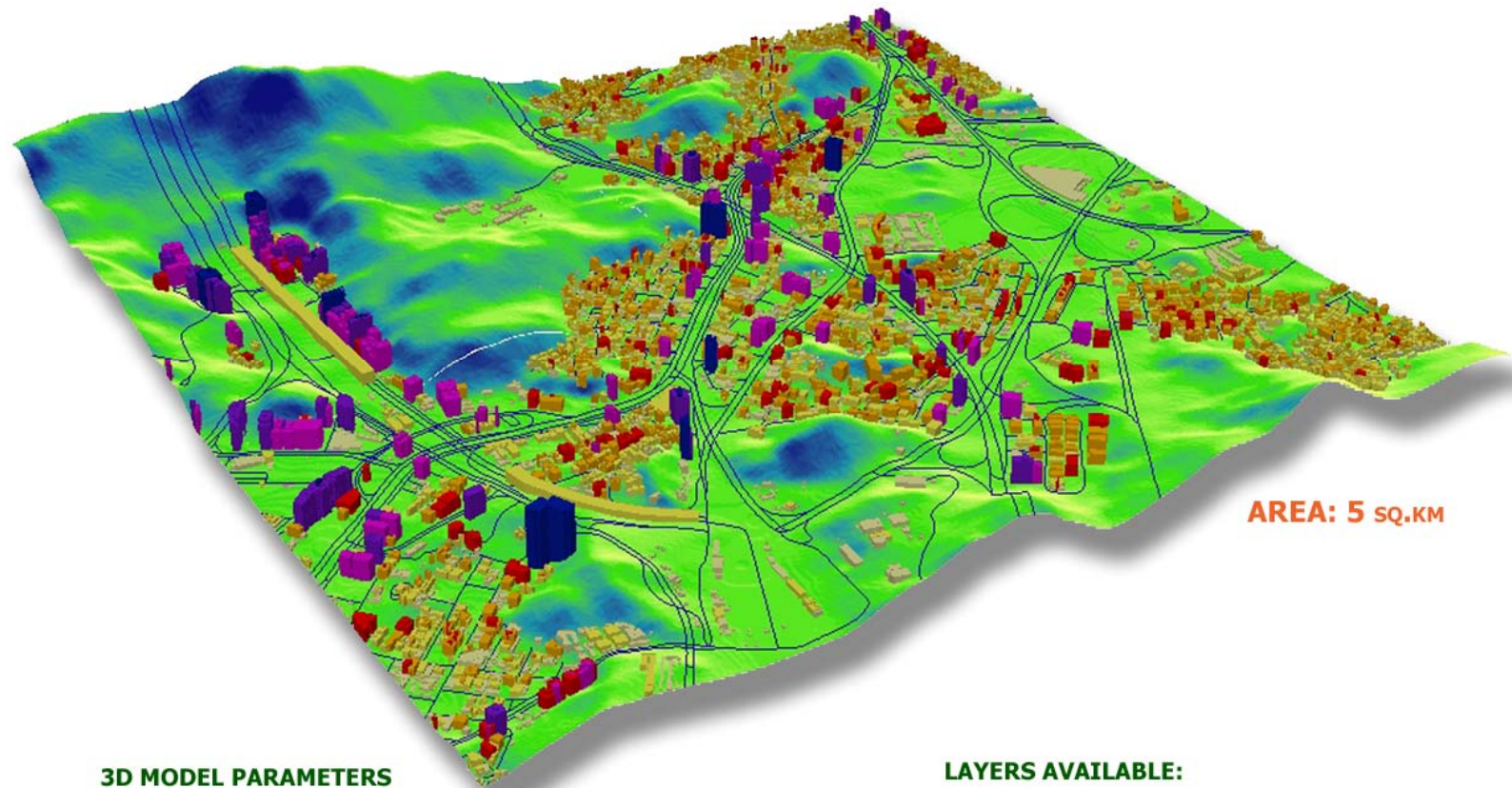
GEODATA FOR RF-PLANNING



**BRING YOUR NETWORK COVERAGE TO PERFECTION  
WITH HIGH-RESOLUTION MAPS**

**TAILORED FOR WIMAX, 3G, 4G, LTE NETWORKS  
PRECISE AND UP-TO-DATE MAPPING INFORMATION  
EXTRA-ACCURATE 3D BUILDING MODEL  
DETAILED AND HIGH-RESOLUTION TERRAIN  
FLEXIBLE PRICE FITTED TO YOUR BUDGET  
DELIVERY IN ANY PLANNING TOOL FORMAT**

# MAKKAH 3D TEST SAMPLE



AREA: 5 sq.km

## 3D MODEL PARAMETERS

- RESOLUTION: 2 m
- VERTICAL ACCURACY (HEIGHTS IN DTM, Z): 2-3 m
- PLANIMETRIC ACCURACY (XY): 3-5 m
- BUILDINGS HEIGHTS ACCURACY (H): 2-3 m

## LAYERS AVAILABLE:

- DIGITAL TERRAIN MODEL (DTM)
- DIGITAL ELEVATION MODEL (DEM)
- 2D CLUTTER MODEL – 20 CLASSES OF OBJECTS
- VECTOR MODEL – 8 CLASSES OF OBJECTS
- BUILDINGS AND OBSTACLES HEIGHTS MODEL
- TEXT LABELS – 5 CLASSES OF OBJECTS
- ORTHOIMAGE

## THE TEST SAMPLE OF MAKKAH 3D MODEL IS AVAILABLE IN ANY RF-PLANNING SYSTEM FORMAT DURING 1 DAY

We are open for cooperation with telecom companies interested in any type of custom-build geospatial data. Our team is always in touch to provide you with all necessary information about Visicom products, to assist you with pre-sales enquiries, commercial offers and customer support

