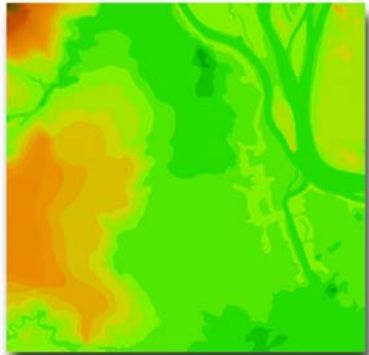




## CAMBODIA ■ PHNOM PEHN ■ 2D CITY MODEL

## CAMBODIA COUNTRYWIDE REGIONAL MODEL

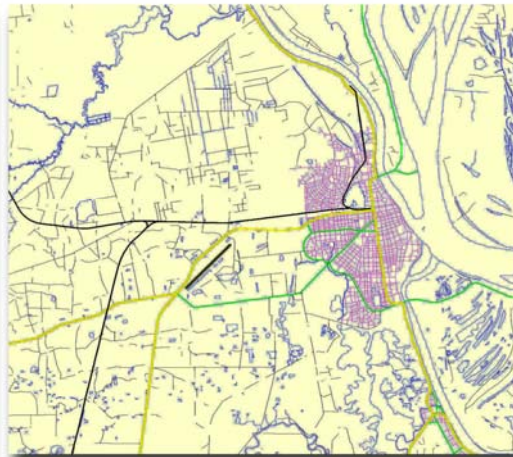
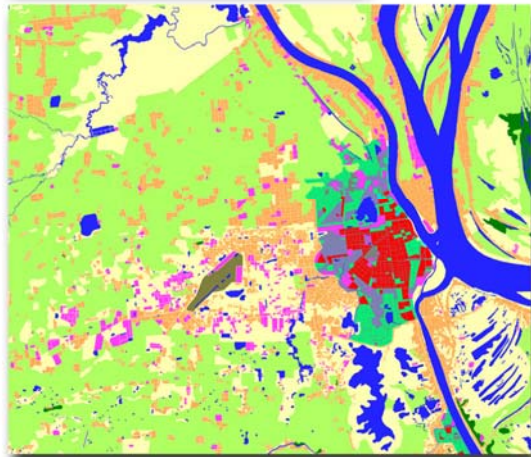
Coverage – 181,040 sq.km



### Package content:

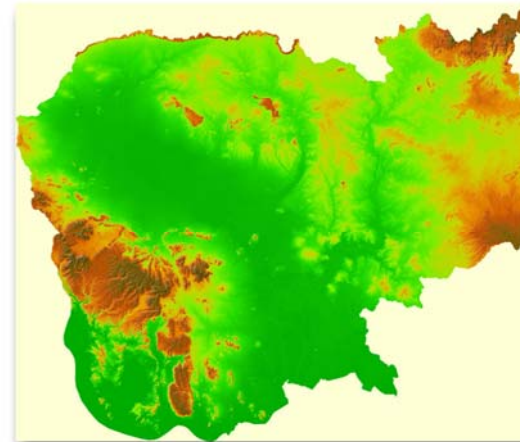
- Digital Terrain Model
- Land Use Map - 17 classes
- Line objects network - 8 classes
- Text labels – 5 classes

Coverage – 625 sq.km



Resolution: 10 m  
 Altimetric accuracy: ±5 m  
 Planimetric accuracy: 15-20 m  
 Source: Satellite image  
 QuickBird with 0,6 m resolution

2D city model can be delivered in the any RF-planning tool format



### Package content:

- Digital Terrain Model
- Land Use Map (Clutter) – 11 classes
- Line objects network – 9 classes
- Text labels – 5 classes

### Model parameters:

- Resolution: 100 m
- Altimetric (Z) accuracy: 20-40 m
- Planimetric accuracy: 150-200 m
- Country model can be delivered in the any RF-planning tool format

