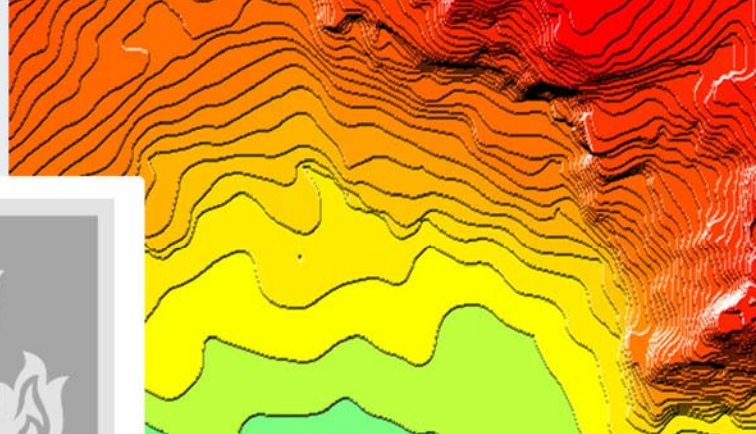


A 3D perspective view of a city model, likely Baku, showing buildings of various heights and colors (orange, red, purple, blue) on a green terrain. A river or canal flows through the city. The top part of the image is a dark green banner containing the title and subtitle.

BAKU 3D

GEODATA FOR RF-PLANNING

**BRING YOUR NETWORK COVERAGE TO PERFECTION
WITH HIGH-RESOLUTION MAPS**



3D MODEL AREA: 265 SQ.KM

3D MODEL PARAMETERS

- RESOLUTION: 2 m
- VERTICAL ACCURACY (HEIGHTS IN DTM, Z): 2,5 m
- PLANIMETRIC ACCURACY (XY): 1-2 m
- BUILDINGS HEIGHTS ACCURACY (H): 1-2 m

PRODUCT ADVANTAGES:

- ALL STAND-ALONE BUILDINGS ARE SHOWN
- VERY PRECISE MEASUREMENTS OF BUILDING'S HEIGHTS
- VEGETATION'S HEIGHTS ARE INCLUDED
- HIGH ACCURACY RELIEF MODEL
- DETAILED CLASSIFICATION OF CLUTTER DATA

LAYERS AVAILABLE:

- DIGITAL TERRAIN MODEL (DTM)
- DIGITAL ELEVATION MODEL (DEM)
- CLUTTER MODEL – 20 CLASSES OF OBJECTS
- VECTOR MODEL – 8 CLASSES OF OBJECTS
- BUILDINGS AND OBSTACLES HEIGHTS MODEL
- TEXT LABELS – 5 CLASSES OF OBJECTS
- ORTHOIMAGE

SOURCES:

- STEREO PAIRS OF SATELLITE IMAGES IKONOS WITH 1 M RESOLUTION
- GSP - GROUND CONTROL POINS

DATA RELEVANCE: 09.2009

THE TEST SAMPLE OF BAKU MODELS IS AVAILABLE IN ANY RF-PLANNING SYSTEM FORMAT DURING 1 DAY

We are open for cooperation with Telecom companies interested in any type of custom-built geospatial data. Our team is always in touch to provide you with all necessary information about Visicom products, to assist you with pre-sales enquiries, commercial offers and customer support